



BY APPOINTMENT TO
H. M. THE QUEEN
SUPPLIERS OF 18TH CENTURY PORCELAINS

ALBERT AMOR LTD.

CHELSEA PORCELAIN

A PRIVATE COLLECTION



PART FOUR - SHAPE AND FORM

37 BURY STREET, ST JAMES'S, LONDON SW1Y 6AU

Tuesday 4th June - Tuesday 25th June 2019

10.00am - 5.30pm

Saturday and Sunday by appointment

TELEPHONE: 0207 930 2444

WWW.ALBERTAMOR.CO.UK

FOREWORD

I am delighted to present the final catalogue in our series of four, dispersing probably the finest collection of Gold Anchor period Chelsea in private hands.

It was always the hope of the collector that this series of exhibitions would promote renewed interest in this, until recently, rather neglected period of Chelsea production, and I am certain this has been the case, not only from the reaction to our pieces, but also from results at auction and elsewhere. From our records we see the enormous interest in and prices paid for Chelsea gold anchor period pieces in the early years of the 20th century, by collectors such as Lady Ludlow and Lord Bearsted. That items of such glamour and technical skill fell out of favour for a period always seemed strange, and I hope the pieces in this catalogue will further reinforce the appreciation of this golden age of English porcelain manufacture.

This catalogue includes a number of blue ground pieces, very finely painted with Chinoiserie and Watteauesque figures, including the fine ecuelle, cover and stand, number 22, and the cup and cover, number 13. It was wonderful that our collector had the opportunity to re-unite the important pair of pot pourri vases and covers, number 41, which had for many years been in different parts of the world.

Of great interest to both porcelain and furniture collectors will be the remarkable pair of vases, number 10, after a design by William Kent. I am also particularly pleased to exhibit for the first time the exceptional Ashburnham Candelabra, which I acquired for the collection in 2006, and which we believe are the last examples of this model in private hands.

I do hope that you will enjoy this catalogue, and that you will have the opportunity to visit Bury Street to see these pieces before they are dispersed.

All exhibits are for sale from the publication of this catalogue. Do please contact me if I can provide further details.

Mark Law

London, May 2019

mark@albertamor.co.uk



1.
A Chelsea large oval sauceboat, with high scroll handle, finely painted in coloured enamels with exotic birds in wooded landscapes, and sprays of flowers and leaves, beneath a gilt feuille de choux border, on four scroll feet, the interior painted with a flower spray, 9" long, circa 1760, no mark



2.
A rare Chelsea flared round basket, the boldly scroll moulded border with two loop handles, painted in coloured enamels with a cluster of fruits and leaves, and scattered fruits, butterflies and insects, and picked out in gilt, the exterior basket moulded, on spreading foot, 8 ¼" diameter overall, circa 1765, gold anchor mark



3.

A pair of Chelsea scroll moulded candlesticks, each painted in coloured enamels with scattered flowers and leaves, applied with coloured flower heads and leaves, and picked out in turquoise, puce and gilt, 7" high, circa 1760-62, gold anchor marks

Provenance; Mrs Charles Wrightsman Collection, New York



4.
A Chelsea ovoid teapot and cover, with flower knop, the pierced scroll handle and spout picked out in gilt, painted in coloured enamels in Meissen style with a couple seated in a garden, beneath a sphinx fountain, figures before monuments, and scattered flowers and leaves, within gilt dentil bands, 5" high, circa 1765, no mark



5.

A Chelsea plate, painted in coloured enamels with scattered butterflies and insects, the border with three pairs of birds, perched on branches, gilt line rim, 8 ¼" diameter, circa 1765, gold anchor mark



6.
A pair of Chelsea part fluted plates, each painted in coloured enamels with European river landscapes with buildings and ruins, and with scattered butterflies and insects, the leaf moulded border picked out in puce and gilt, gilt line rim, 8 $\frac{3}{8}$ " diameter, circa 1762-65, gold anchor marks

Provenance; The Antique Porcelain Company, New York



7.

A pair of Chelsea lobed oval dishes, each boldly painted in coloured enamels with a cluster of fruits and leaves, and four butterflies and insects, the ribbon tied scroll moulded border picked out in turquoise, puce and gilt, 10 $\frac{1}{8}$ " wide, circa 1765, gold anchor marks



8.
A rare Chelsea chamber candlestick, of scroll moulded form, with loop handle, painted in coloured enamels with scattered flowers and leaves, and picked out in blue and gilt, 3 ¼" high, circa 1765, gold anchor mark

See Dennis G Rice, *Derby Porcelain, The Golden Years 1750-1770*, plate 149, for a Derby chamber candlestick of this model, circa 1765



9.
A rare Chelsea straight sided chocolate cup and saucer, the cup with two pierced scroll handles picked out in gilt, painted in coloured enamels with bold flower sprays, on a pale yellow ground, gilt line borders, the cup 3 1/2" high, circa 1765, gold anchor marks

The pale yellow ground is the rarest of the Chelsea gold anchor period ground colours



10.

An important pair of Chelsea large ovoid vases, after a design by William Kent, each with waisted neck, moulded with stiff leaves, the two scroll handles united by a band of gilt grapes and vine leaves, on a blue ground decorated in gilt with butterflies and other insects, the knopped stem modelled with a salamander, on round stiff leaf bordered base, 11 ¾" high, circa 1760, no mark

Provenance; W H Pitts Collection

These remarkable vases relate closely to the drawing by William Kent (1685-1748), engraved by John Vardy. The present vases follow the Kent drawing in overall form, foot and rim detail, and the moulded vine decoration, and the handle detail is identical to the handles seen here

See F S Mackenna, Chelsea Porcelain, The Gold Anchor Wares, for another pair of these vases, in the Huntington Art Gallery, San Marino

We know of no other Chelsea vase form relating so closely to the designs of Kent



11.
A Chelsea bell shaped coffee cup and saucer, the cup with leaf moulded loop handle, finely painted in purple monochrome with exotic birds in landscapes, and birds in flight, within gilt zig-zag and pendant flower borders, circa 1760, gold anchor marks



12.

A rare pair of Chelsea small pierced flared round baskets, each basket moulded exterior picked out in gilt, 3 ¾" diameter, circa 1765, gold anchor marks

Provenance; Barbara Leake Collection



13.

A Chelsea straight sided cup and domed cover, with two scroll handles and loop scroll knob, very finely painted in coloured enamels with a lady in Turkish costume, holding a fan, and a young man playing a violin, each seated in a garden, and flanked by birds in branches, the cover with a young boy and girl, within gilt flower, leaf and 'C' scroll cartouches, on a blue ground, gilt line and dentil borders, 5 ½" high, circa 1762, gold anchor mark

See Flowers and Fables Exhibition, National Gallery of Victoria, 1984, number 184, for a cup of this form, but lacking its cover



14.

A Chelsea round stand, particularly finely painted in coloured enamels with radiating fan shaped panels of exotic birds in trees, alternating with blue ground panels, decorated in gilt with flowers, leaf scrolls, scale and diaper panels, gilt dentil rim, 7 ½" diameter, circa 1765, no mark



15.
A Chelsea pierced oval basket, painted in coloured enamels with a cluster of fruits and leaves, and a raspberry, the basket moulded border moulded with flower heads, picked out in blue and puce, gilt line rim, 10 $\frac{3}{4}$ " wide, circa 1765-68, gold anchor mark



16.

A rare Chelsea helmet shaped ewer and lobed basin, after a Meissen original, the ewer with leaf moulded scroll handle, and modelled with a shell at the base, on knopped stem and lobed foot, finely painted in coloured enamels with sprays of flowers and leaves, within gilt leaf scroll and herringbone bands, the ewer 8 ½" high, circa 1755, red anchor marks

Provenance; By repute Lowther Castle

See the Catalogue of the Lady Ludlow Collection at Bowes Museum, page 138, number 114, for a Chelsea blue ground ewer and basin of this form, painted with exotic birds. Another, also with blue ground, is in the Irwin Untermyer Collection, Metropolitan Museum of Art, New York, and illustrated Yvonne Hackenbroch, Figure 59, plate 49



17.

A pair of Chelsea two branch candelabra, each in the form of a cherub, he with a quiver of arrows, and she with a basket of flowers, and each garlanded with flowers, their robes decorated in turquoise, puce and gilt, the scroll moulded branches each supporting a pierced sconce, on shell and scroll moulded base, picked out in gilt, 11" high, circa 1765, unusual double gold anchor marks



18.

A Chelsea conical tea bowl and saucer, from the Gladstone Service, finely painted in coloured enamels with exotic birds in wooded landscapes, within gilt flower, leaf and trellis cartouches, on a blue ground, the interior of the tea bowl with a gilt flower spray, gilt dentil rims, circa 1762, gold anchor marks

Provenance; The Cramer Collection



19.
A pair of Chelsea ovoid flask shaped vases and scroll moulded stoppers, each with two pierced scroll handles, linked by pierced shells, finely painted in coloured enamels with Chinese children with toys, fruits and a parasol, in garden landscapes, within gilt flower, leaf and scroll cartouches, on a blue ground, 8 ½" high, circa 1765, no marks

A vase of this form is in the Victoria and Albert Museum



20.

A Chelsea straight sided coffee cup, with slightly flared rim, boldly painted in coloured enamels with a cut apple, cherries, nuts, butterflies and blossom, the interior painted with a gooseberry and a pear, the pierced scroll handle picked out in gilt, 2 $\frac{3}{4}$ " high, circa 1762, gold anchor mark



21.

A Chelsea chocolate cup and trembleuse saucer, the cup with two ear shaped handles, finely painted in coloured enamels with trailing flowers and leaves, suspended from bold blue star shaped panels, decorated in gilt with scales and pendant 'C' scrolls, the cup 2 $\frac{3}{8}$ " high, circa 1765, gold anchor marks

Provenance; Nigel Morgan Collection

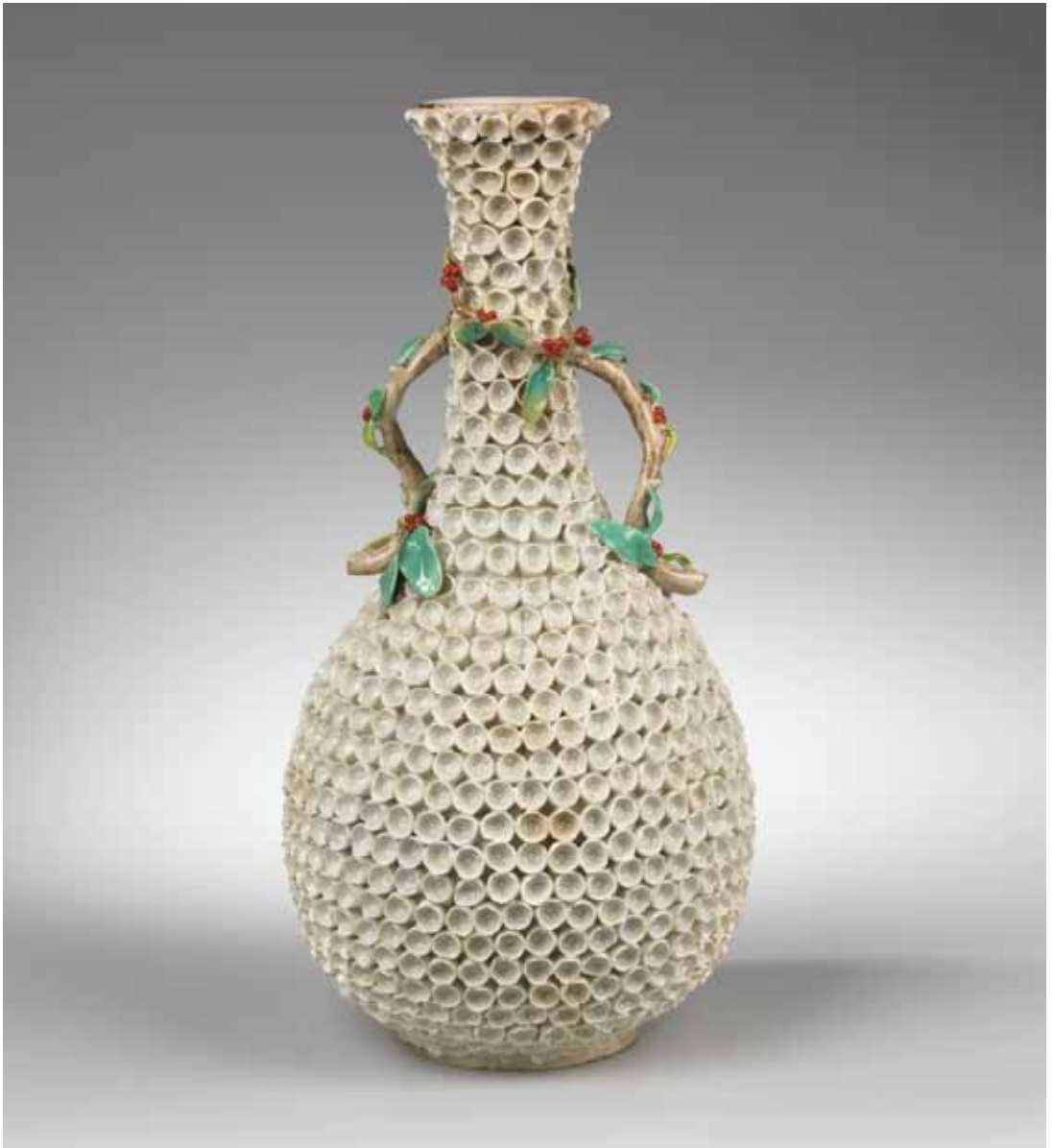
Exhibited; National Gallery of Victoria, Flowers and Fables Exhibition, 1984, number 175



22.
A Chelsea round ecuelle, cover and stand, with two leaf moulded loop handles and pointed knob, finely painted in coloured enamels with pairs of children playing instruments in wooded landscapes, within gilt fan shaped flower, leaf and diaper cartouches, on a blue ground, gilt dentil borders, the interior with a gilt flower spray, scattered flowers and a winged insect, 7 ¼" diameter overall, circa 1760, gold anchor marks

Provenance; Probably Sir Henry Hope Edwardes Bt, Wootton Hall, Derbyshire, and sold from his estate Christies, 25th April 1901, lot 192 (bought by Robson for £44.2/-), and presumably re-acquired by Lt Col Herbert James Hope Edwardes, Netley Hall, Shropshire, and then by family descent

Literature; T. Cox, Inventory of the Contents of Netley Hall, Shropshire, 1914, page 4 (Drawing Room)



23.

A Chelsea slender baluster shaped vase, with two twig loop handles with applied leaf and berry terminals, on a blossom applied ground, each flower head with puce stamen, 11 ¼" high, circa 1765, no mark



24.

An extremely rare Chelsea large ovoid vase and domed cover, the two elaborate pierced scroll handles picked out in turquoise and gilt, and with boldly applied pink rose, rosebud and leaf terminals, united by a similar garland to one side, the reverse painted in coloured enamels with an exotic bird perched on rockwork, and two birds in branches, on knopped stem and scroll moulded round base picked out in turquoise and gilt, 15 ¼" high, circa 1758-60, no mark



Provenance; Dr and Mrs Bellamy Gardner Collection, sold Sotheby's 12th June 1941, lot 105
Sir Bernard Eckstein Collection, sold Sotheby's 29th March 1949, lot 128
Nigel Morgan Collection

Exhibited; National Gallery of Victoria, Flowers and Fables Exhibition, 1984, number 168

Illustrated; ECC Transactions, 1999, Volume 17, Part I, Chelsea Gold Anchor Vases I; The Forms, by J V G Mallet, figures 31 and 32 (present whereabouts then unknown)



25.

A Chelsea flared beaker, finely painted in coloured enamels with pairs of children playing musical instruments in wooded landscapes, within ogee shaped gilt flower, 'C' scroll and trellis cartouches, on a blue ground, gilt line and dentil rims, the interior decorated in gilt with scattered flowers, 3 ½" high, circa 1760, gold anchor mark

See F S Mackenna, Chelsea Porcelain, The Gold Anchor Wares, plate 17, number 32, for a similarly decorated beaker of this form



26.

A rare Chelsea oval dish, finely painted in coloured enamels with *Le Pannier Mystérieuse*, after Boucher, within a fluted cavetto painted with scattered flowers, the leaf scroll moulded rim picked out in gilt, 11 ½" wide, circa 1760, no mark

Provenance; Ward Collection

The Property of a Lady, Sotheby's, 17th July 1951
With the Antique Porcelain Company

Exhibited; Worlds End Exhibition, Old Chelsea, 1948, number 46



27.
A Chelsea plate, painted in coloured enamels with two birds in flight, within a broad gilt vine roundel, the blue ground painted with three clusters of fruits and leaves, within gilt flower, leaf and trellis cartouches, on a blue ground, gilt dentil rim, 8 $\frac{3}{4}$ " diameter, circa 1765, gold anchor mark



28.

A Chelsea round bowl, cover and stand, with open variegated tulip knob, applied overall with may blossom, each yellow tinted flower head with puce stamen, the interior of the bowl and cover, and the centre of the stand painted in coloured enamels with flower sprays and scattered flowers, gilt line rims, 9 ½" diameter, circa 1768, gold anchor marks

See *Flowers and Fables*, National Gallery of Victoria, 1984, number 167, for a similar bowl, cover and stand



29.
 A pair of Chelsea slender lobed cylindrical vases, each with waisted neck, painted in coloured enamels with exotic birds in fruiting trees, within gilt scroll, flower and leaf cartouches, on a blue ground, the shoulder with panels of birds in flight, 11" high, circa 1765, no marks

See Albert Amor Limited, Golden Jubilee Exhibition 2002, number 38, for a pair of two handled vases of this form, with comparable painting, but lacking the additional panels of birds in flight



30.

A Chelsea plate, finely painted in coloured enamels with buildings and trees in a river landscape, surrounded by a caterpillar, a butterfly and other insects, the shaped border with garlands of flowers and leaves, alternating with five blue ground panels, decorated in gilt with insects, gilt line rim, 8 ½" diameter, circa 1762, gold anchor mark



31.
A Chelsea deep plate, painted in coloured enamels with butterflies and other insects, within a gilt stiff leaf roundel, the broad blue ground border with numerous birds in flight, within three cartouche shaped panels, with gilt flower, leaf and trellis borders, gilt dentil rim, 9" diameter, circa 1765, gold anchor mark and number 10 boldly in gilt

Provenance; The Dukes of Newcastle, Clumber Park



32.

A Chelsea plate, painted in coloured enamels with three exotic birds perched in a tree, and with smaller birds in flight, within a gilt interlinked scroll roundel, the blue ground border with a band of gilt leaf scrolls and entwined leaves, the indented rim with a gilt dentil band, 8 ³/₈" diameter, circa 1760, gold anchor mark

Provenance; Thomas, 2nd Marquess of Bath (1765-1847), Longleat, Wiltshire, and by descent until sold Christies London, Thursday 13th June 2002, part lot 314

Literature; Longleat 1869 Inventory 'Fourteen old Chelsea plates deep blue with insects in gold and exotic birds in colours in medallions'
Longleat 1896 Inventory (2nd Marquess' Heirlooms)



33.
A Chelsea bell shaped coffee cup, with scroll handle, painted in coloured enamels with a young girl holding a fan, and a young boy playing a tambourine, alternating with blue ground panels decorated in gilt with flower garlands and 'C' scrolls, gilt dentil rim, 2 ½" high, circa 1762-65, gold anchor mark



34.

A Chelsea plate, of Duke of Cambridge pattern, boldly painted in coloured enamels with a cluster of vegetables, fruits and leaves, and a butterfly, the border with five insects, within turquoise and gilt scroll moulded cartouches, alternating with fruits and leaves, within a *feuille de choux* border, 9" diameter, circa 1765-68, gold anchor mark



35.

An unusual Chelsea plate, painted in coloured enamels in Giles atelier style with four sprays of flowers and leaves, and scattered flowers, the lobed border with three shell moulded panels, picked out in turquoise and gilt, united by blue and gilt parallel bands, 9" diameter, circa 1768, gold anchor mark

Provenance; Cottam Collection



36.

A Chelsea plate, finely painted in coloured enamels with two cut pomegranates on a branch, a caterpillar, butterflies and other insects, within a gilt roundel, the blue ground border with birds on branches and in flight, within three gilt flower, leaf and trellis cartouches, gilt dentil rim, 8 ¼" diameter, circa 1765-68, gold anchor mark



37.
A rare Chelsea large round ecuelle, cover and trembleuse stand, with two wishbone handles and ball knob, very finely painted in green camaieu with river landscapes, with buildings, including churches, within gilt scroll and geometric borders, the interior of the ecuelle painted with a cottage, ruins and trees in a river landscape, 11" diameter overall, circa 1760-65, gold anchor marks

Provenance; Sir Robert Fitzroy Collection

The Lady Ludlow Collection, number 11, and with printed collection label, acquired from Albert Amor Limited, and with early Albert Amor label and stock number 754

Illustrated; Old English Porcelain, The Lady Ludlow Collection, London 1932, plate 81, catalogue number 181

A stand of this form, also with green camaieu decoration and a similar gilt border, is in the British Museum





38.

A pair of Chelsea plates, each centrally painted with a pear or cherries, within a gilt star shaped cartouche, the blue ground border with three bold pairs of birds in leafy branches, within gilt 'C' scroll and trellis cartouches, gilt dentil rim, 8 ½" diameter, circa 1765, gold anchor marks



39.

A Chelsea round dish, boldly painted in coloured enamels with a cut pomegranate, a pear, flowers and leaves, and scattered flowers, the rim painted with five fruits, each within a 'C' scroll moulded cartouche, the lobed rim picked out in gilt, 9 1/8" diameter, circa 1762, gold anchor mark

This dish is of exactly the form used for the celebrated Duke of Cambridge Service



40.
A Chelsea plate, painted in coloured enamels with flowers and leaves, within a gilt star shaped panel, the blue ground border with flowers, within five gilt 'C' scroll moulded cartouches, alternating with gilt birds on branches, gilt line rim, 9" diameter, circa 1765-68, gold anchor mark

This plate is of exactly the form used for the celebrated Duke of Cambridge Service



41.

A Chelsea plate, painted in coloured enamels with three sprays of flowers and leaves, alternating with blue ground mirror shaped panels decorated in gilt with birds and leaves, linked by 'C' scrolls and trellis, gilt dentil rim, 8 ½" diameter, circa 1765-68, gold anchor mark



42.
A fine pair of Chelsea lobed ovoid pot pourri vases, after a Vincennes model by Jean-Claude Duplessis, each with pierced neck and pierced domed cover, with flower knob, superbly painted in coloured enamels, probably by John Donaldson, with a God and Goddess and attendants, after Francois Boucher, inscribed in iron red on ribbons 'Brevi complexor sungula Canto', 'Non nisi Grandia Canto', 'Irridens Cuspide Figo' and 'Non Nisi Grandia Canto', and alternating with panels of exotic birds in garden landscapes with buildings, within scroll moulded gilt cartouches, on a blue ground, the four scroll feet decorated in gilt with flowers and leaves, 11 $\frac{3}{4}$ " high, circa 1765, gold anchor marks

A vase of this form features in the celebrated portrait of Nicholas Sprimont

The source of the decoration on these important vases is a series of four engravings by Claude-Augustin-Pierre Duflos (1700–1786), after Francois Boucher, entitled 'La Poesie Satyrique', 'La Poesie Lyrique', 'La Poesie Epique' and 'La Poesie Pastorale'

See F S Mackenna, Chelsea Porcelain, The Gold Anchor Wares, plate 35, number 66, for another pair of vases of this form, but painted with Watteauesque figures, in the Huntington Art Gallery, San Marino





43.
A Chelsea Derby plate, painted in coloured enamels with a tulip and other flowers and leaves, the rim with five blue ground panels, each within a gilt cornucopia and leaf scroll cartouche, gilt line rim, 9" diameter, circa 1768-70, no mark



44.

A Chelsea Derby plate, outside decorated in coloured enamels, probably in the London atelier of James Giles with three clusters of fruits, including a cut apple, a Ladybird, and two butterflies, the 'C' scroll and stiff leaf moulded rim with gilt line and dentil bands, 9" diameter, circa 1770-75, gold anchor mark

Illustrated; Stephen Hanscombe, *James Giles, China and Glass Painter*, 2005, number 117

See Gerald Coke, *In Search of James Giles*, plate 15 (b), for a similarly decorated Chelsea Derby plate, shown with an almost identical Worcester kidney shaped dish



45.
A Chelsea pierced oval basket, the two ribbon tied loop handles picked out in turquoise, and with applied coloured flower and leaf terminals, the interior boldly painted in coloured enamels with a fig, plums and cherries, gilt line rim, the exterior modelled with flower heads, picked out in blue and yellow, 12" wide, circa 1765-68, gold anchor mark



46.

A Chelsea ovoid pot pourri vase and pierced domed cover, with flower finial and three female term supports, with claw feet, united by applied garlands of flowers and leaves, picked out in puce and gilt, the blue ground decorated in gilt with butterflies, the plinth base decorated in gilt with flowers, within scale panels, 10 ½" high, circa 1768, traces of gold anchor mark



47.

A Chelsea lobed ovoid pot pourri vase, after a Vincennes model by Jean-Claude Diplessis, with pierced shoulder and pierced domed cover, with open flower knop, finely painted in green monochrome with buildings in extensive river landscapes, within gilt scroll bordered cartouches, on a blue ground, on four scroll feet, 8 ½" high, circa 1765, gold anchor mark

A vase of this form features in the celebrated portrait of Nicholas Sprimont



48.

A pair of Chelsea deep round dishes, each boldly painted in coloured enamels with sprays of flowers and leaves, the indented border with brown line rim, 9 ½" diameter, circa 1760, brown anchor marks



49.
A pair of Chelsea plates, each brightly painted in coloured enamels with a spray of flowers and leaves, and scattered flowers, the scroll moulded border picked out in blue and gilt, 8 $\frac{3}{4}$ " diameter, circa 1765, gold anchor marks



50.

A pair of Chelsea plates, each painted in coloured enamels with scattered fruits, the rim with three pairs of confronting birds, on fruiting branches, within moulded shells and 'C' scrolls, picked out in gilt, 8 ½" diameter, circa 1760-62, gold anchor marks



51.
A Chelsea bell shaped coffee cup and saucer, the cup with pierced scroll handle, finely painted in coloured enamels with exotic birds in branches, alternating with blue ground fan shaped panels, decorated in gilt with flowers, leaf scrolls and trellis, gilt dentil borders, circa 1760, gold anchor marks



52.

A rare Chelsea teapot and flat cover, of conical form, with leaf moulded wishbone shaped handle and open flower knob, painted in green camaieu with a continuous European harbour scene, and similar smaller vignettes, within gilt dentil borders, 4 ½" high, circa 1762-65, gold anchor mark

Provenance; Mrs Macalaster Collection
Martha Howell Collection
Zorka Hodgson Collection

Exhibited; Chelsea Royal Hospital, China Exhibition, 1951

Illustrated; F S Mackenna, Chelsea Porcelain, The Gold Anchor Wares, plate 1.2



53.
A Chelsea plate, painted in coloured enamels with a winged insect, a ladybird and two raspberries, the border with three groups of confronting birds in branches, above puce and gilt scrolls, the feather moulded rim picked out in turquoise and gilt, 8 ¼" diameter, circa 1762-65, gold anchor mark



54.

A pair of Chelsea vases, emblematic of Summer and Autumn, each painted in coloured enamels with exotic birds in wooded landscapes, within a scroll moulded cartouche, Summer modelled with a putto holding corn, and with strawberries, fruits and flowers, and Autumn with a Bacchanalian faun and modelled with grapes and leaves, each boldly decorated in coloured enamels, on mound base, 14 ½" high, circa 1762, gold anchor marks

See F S Mackenna, Chelsea Porcelain, The Gold Anchor Wares, plate 24, numbers 47 and 48, for similar vases



55.
A Chelsea candlestick, in the form of a gardener, standing, holding a spade in his left hand, and wearing a turquoise cap, puce coat and flower patterned breeches, and supporting a pierced and leaf moulded sconce, on shell and scroll moulded base, picked out in turquoise, puce and gilt, and applied with coloured flowers and leaves, 8 3/4" high, circa 1762, gold anchor mark



56.

A rare Chelsea vase, of tapering square section form, finely painted in coloured enamels with numerous figures in European harbour scenes, with shipping, buildings and dogs, on a blue ground decorated in gilt with flowers and leaves, the shoulder and neck with smaller panels of birds in flight, beneath a stiff leaf moulded rim, picked out in gilt, 12 ¾" high, circa 1760-62, gold anchor mark

See F S Mackenna, Chelsea Porcelain, The Gold Anchor Wares, plate 23, number 45, for another vase of this form, painted with birds and flowers, formerly in the Hurlbutt Collection. Another, painted with four individual panels, including Chinese figures and harbour scenes, was exhibited in Part Three of the present collection, number 34



57.

The Ashburnham Candelabra

A highly important pair of Chelsea large three light candelabra, each superbly modelled with a stag or a leopard being attacked by hounds, decorated in coloured enamels, before bocage of honeysuckle and may blossom, supporting the scroll moulded branches, the scroll moulded base picked out in gilt, and applied with coloured flowers and leaves, 16 ¼" high, circa 1760-65, gold anchor marks





Provenance; The Rt Hon Earl of Ashburnham,
Ashburnham, Battle, East Sussex

See Catalogue of the Lady Ludlow Collection
at Bowes Museum, number 90, for a similar
pair, acquired from Albert Amor on July 26th
1926 for £2000.

In Christies first sale, 5th December and later,
1766, lot 69 'A pair of grand Chelsea candlesticks
with tiger and buckhunting' probably relates to
this form





58.

A Chelsea flared round teacup and saucer, the cup with pierced scroll handle, painted in coloured enamels with flower sprays, the blue ground borders finely decorated in gilt with a Chinese lady, seated holding a fan, within a flower, leaf and trellis cartouche, and with birds, trellis and scrolls, gilt dentil rims, circa 1765, gold anchor marks

See *Flowers and Fables*, National Gallery of Victoria, 1984, number 177, for a matching teapot and cover

See also F S Mackenna, *Chelsea Porcelain, The Gold Anchor Wares*, plate 16, number 30, for another teacup and saucer from this service





WWW.ALBERTAMOR.CO.UK